

**Verification of road tests on the chassis dynamometer
and by simulation using KULI**



**Thomas Buchholz
BorgWarner Cooling Systems**

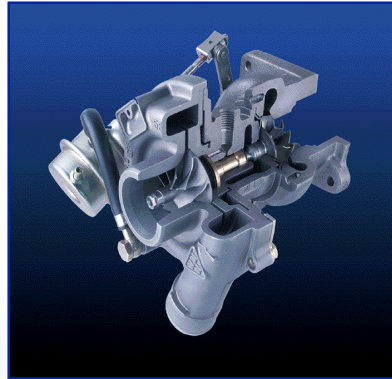
**Verification of road tests on the chassis
dynamometer and by using KULI**

Verification of road tests on the chassis dynamometer and by simulation using KULI

BorgWarner Operations



Morse TEC/Chain and Turbo Systems



Transmission Systems



TorqTransfer Systems

Air/Fluid Systems



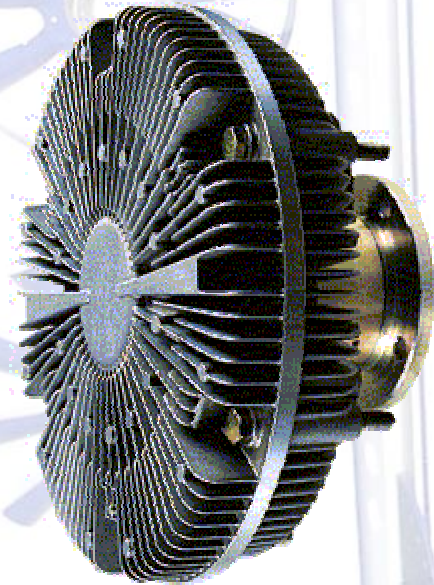
Cooling Systems



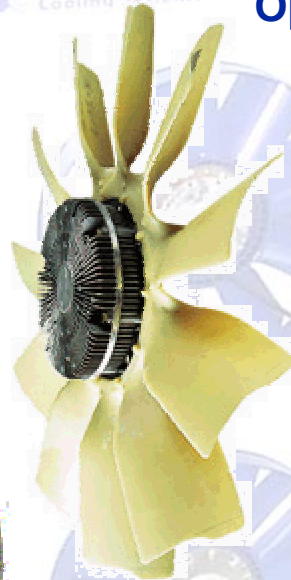
Verification of road tests on the chassis dynamometer and by simulation using KULI



Products:



**Electrically controlled
Viscous Fan Drives**



Open Fans



Ring Fans



**Bimetal controlled
Viscous Fan Drives**

Verification of road tests on the chassis dynamometer and by simulation using KULI

 **BorgWarner**
Cooling Systems
Location Germany



Verification of road tests on the chassis dynamometer and by simulation using KULI

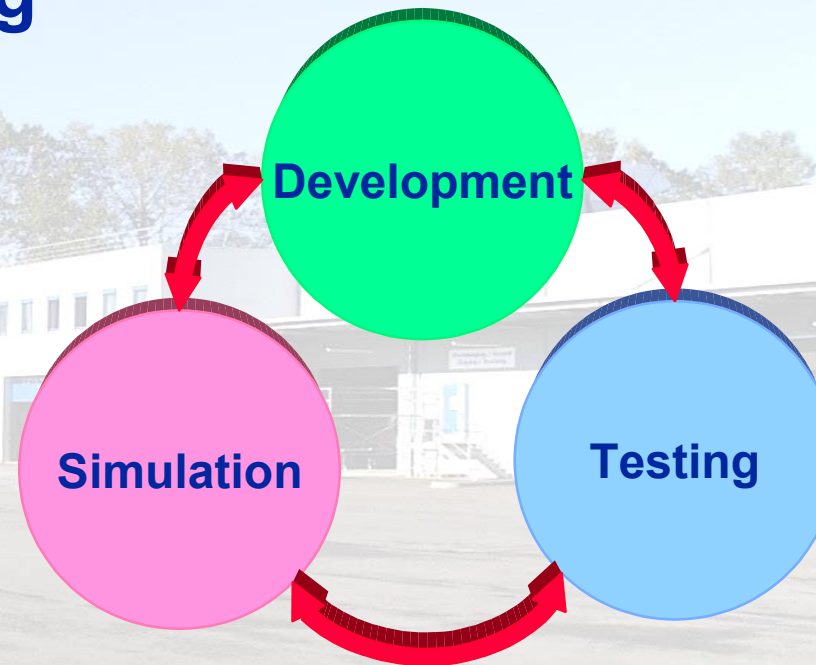


**BorgWarner
Cooling Systems**

System Engineering

- Development of mechatronic components
- Development of control software and strategies
- Development of cooling systems

- BorgWarner Software Tools
- Simulink
- KULI
- CFD Tools



- Road / Field Invehicle Tests
- Tests in Chassis Dynamometer
- Tests in Component Test Benches (Fullambient Tester)



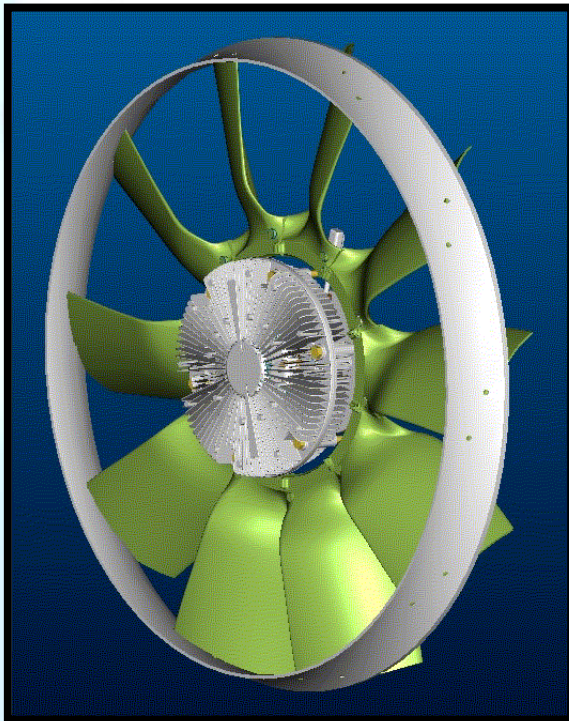
**BorgWarner
Cooling Systems**

System Engineering
Markdorf, Germany
12.11.2001

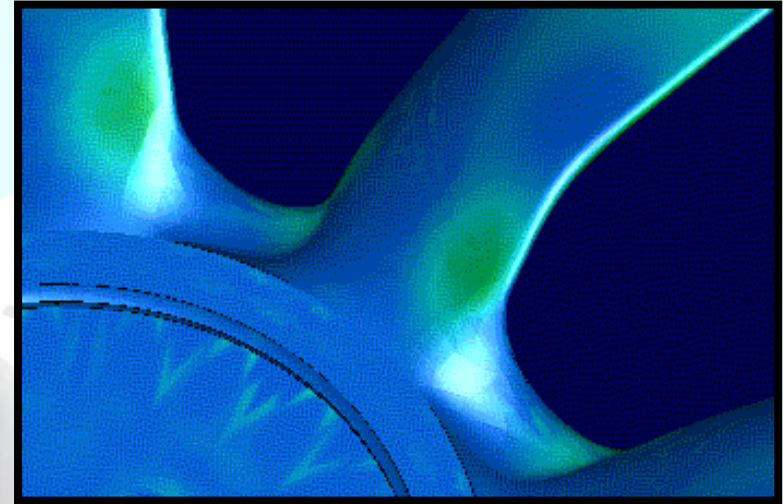
Verification of road tests on the chassis dynamometer and by simulation using KULI



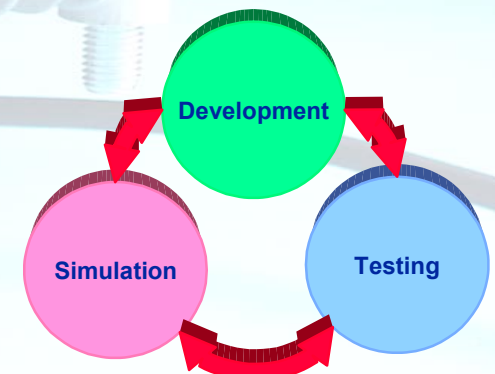
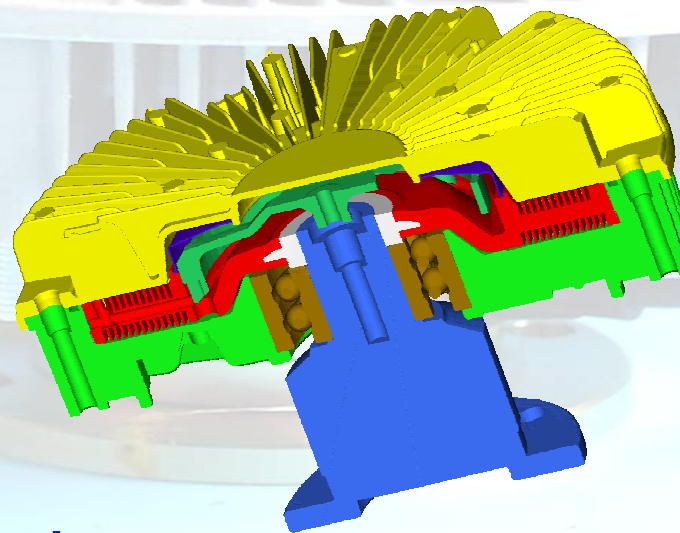
Development



CAD Design



FEA

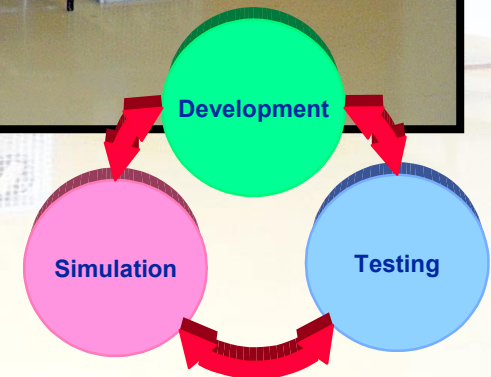
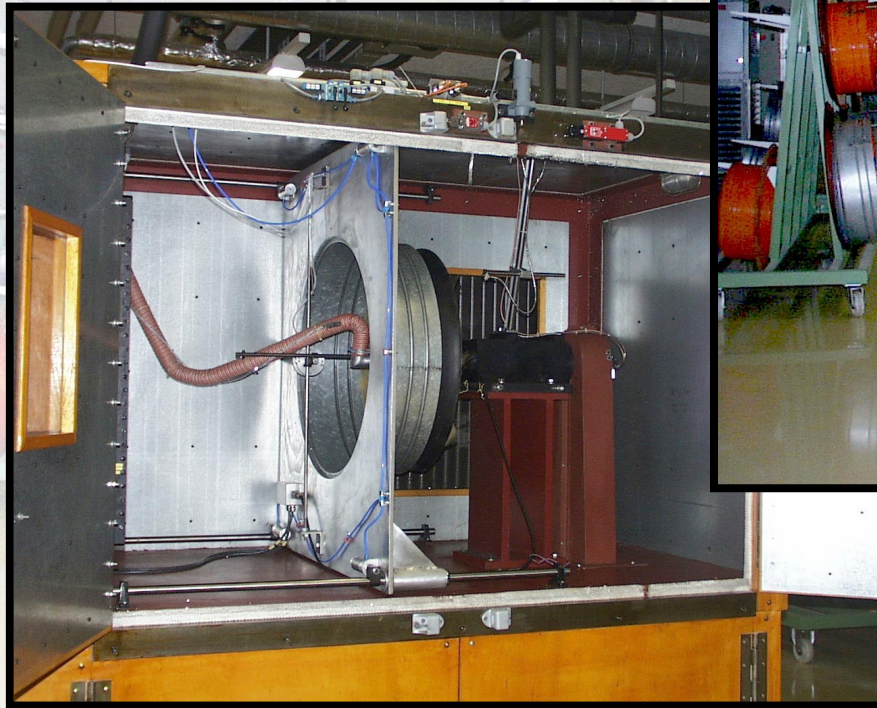


Verification of road tests on the chassis dynamometer and by simulation using KULI



**BorgWarner
Cooling Systems**

Component testing



**BorgWarner
Cooling Systems**

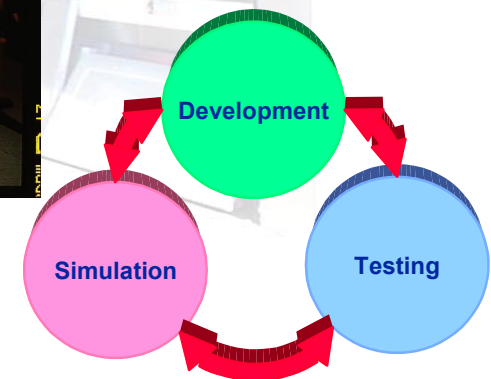
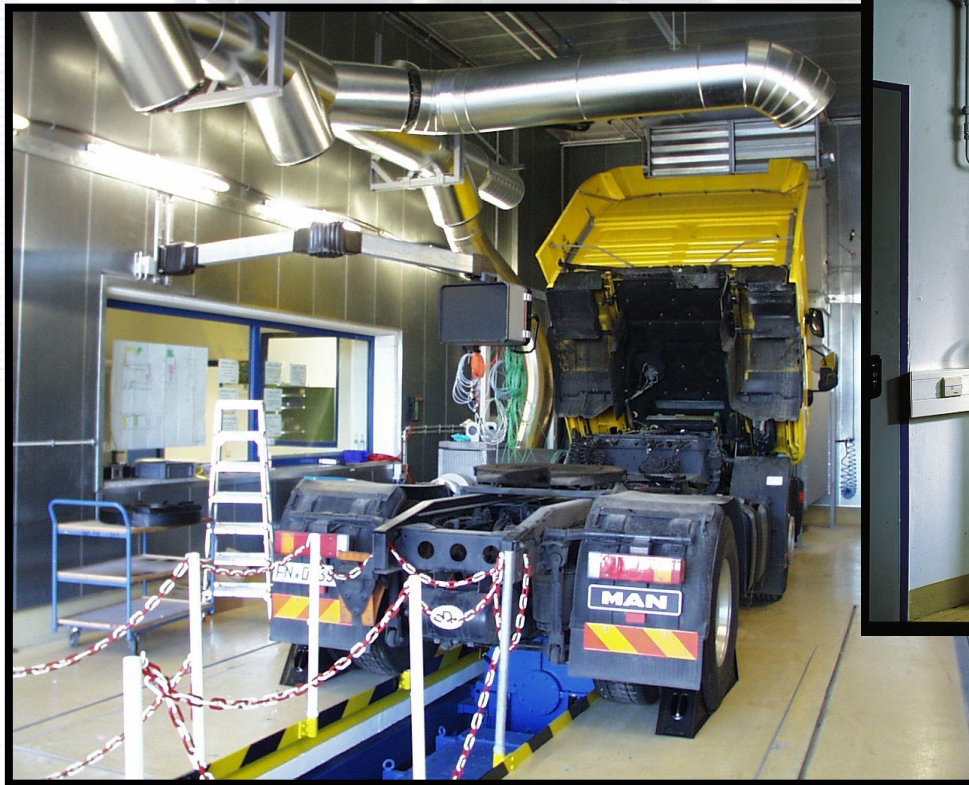
System Engineering
Markdorf, Germany
12.11.2001

Verification of road tests on the chassis dynamometer and by simulation using KULI



**BorgWarner
Cooling Systems**

Vehicle testing



**BorgWarner
Cooling Systems**

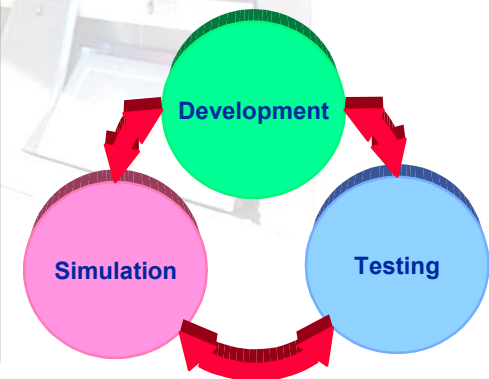
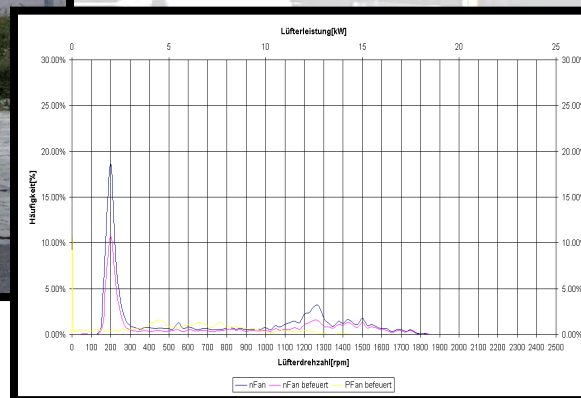
System Engineering
Markdorf, Germany
12.11.2001

Verification of road tests on the chassis dynamometer and by simulation using KULI



**BorgWarner
Cooling Systems**

Vehicle testing



**BorgWarner
Cooling Systems**

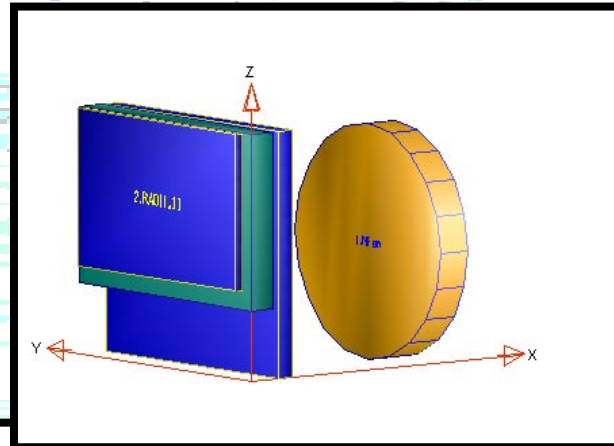
System Engineering
Markdorf, Germany
12.11.2001

Verification of road tests on the chassis dynamometer and by simulation using KULI

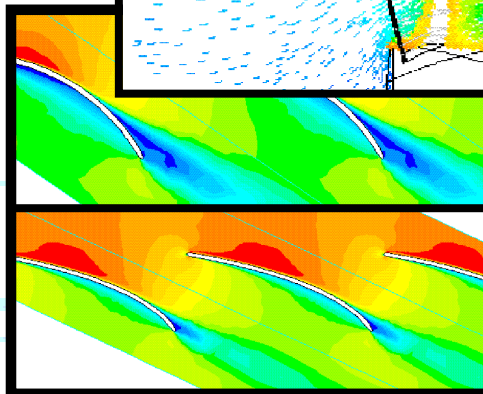
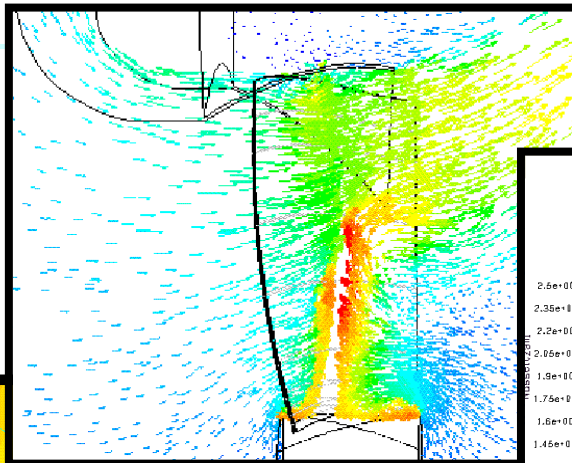


**BorgWarner
Cooling Systems**

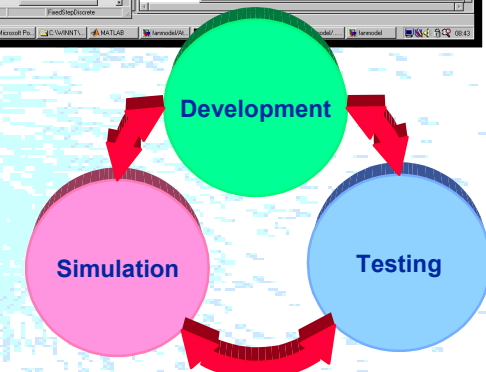
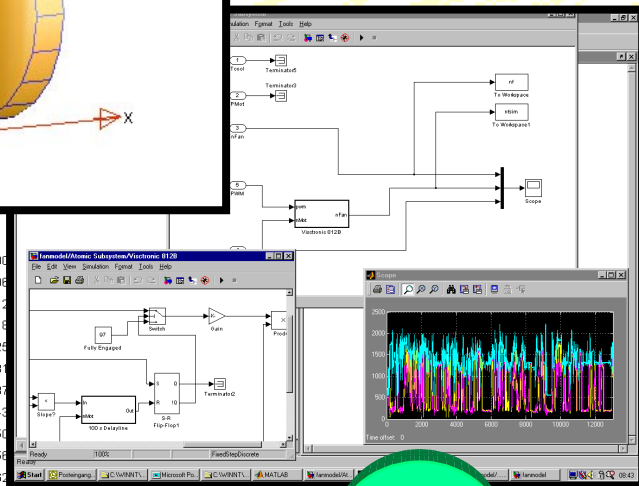
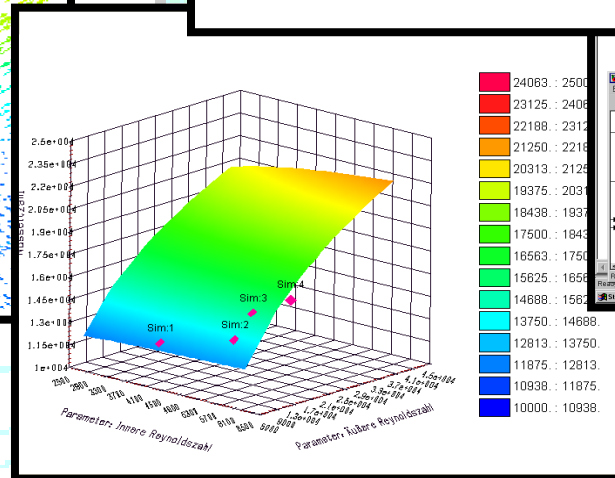
Simulation



**KULI &
Simulink**



CFD

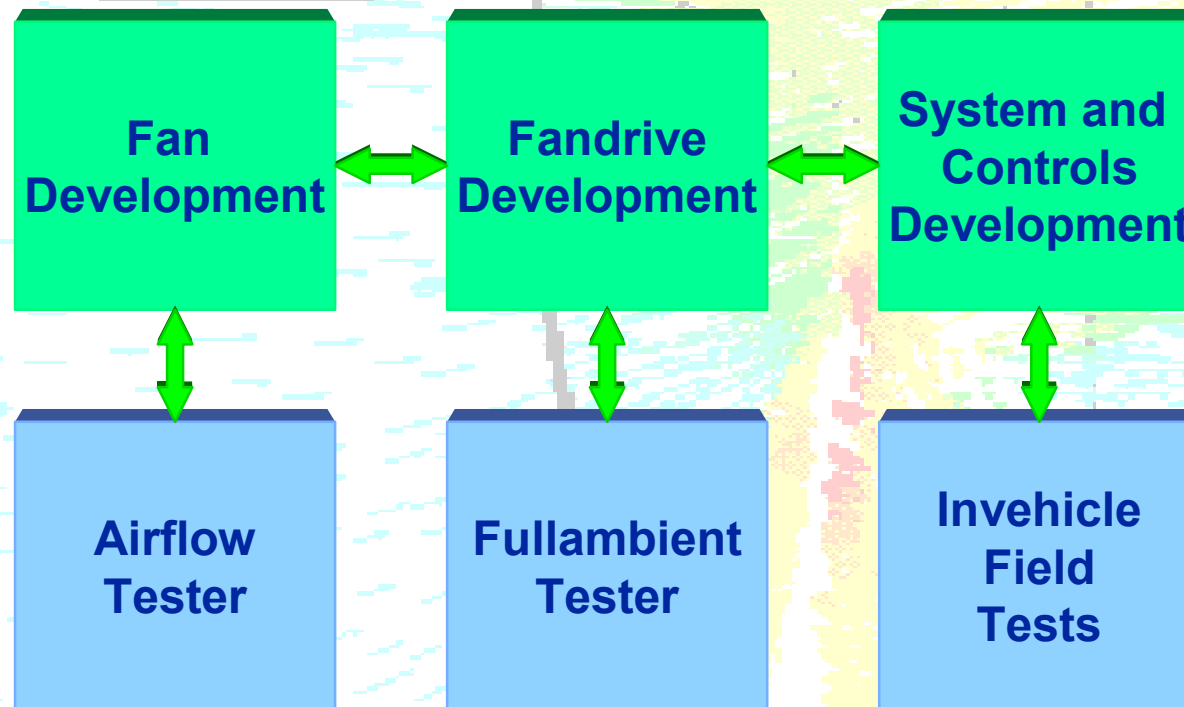


**BorgWarner
Cooling Systems**

**System Engineering
Markdorf, Germany
12.11.2001**

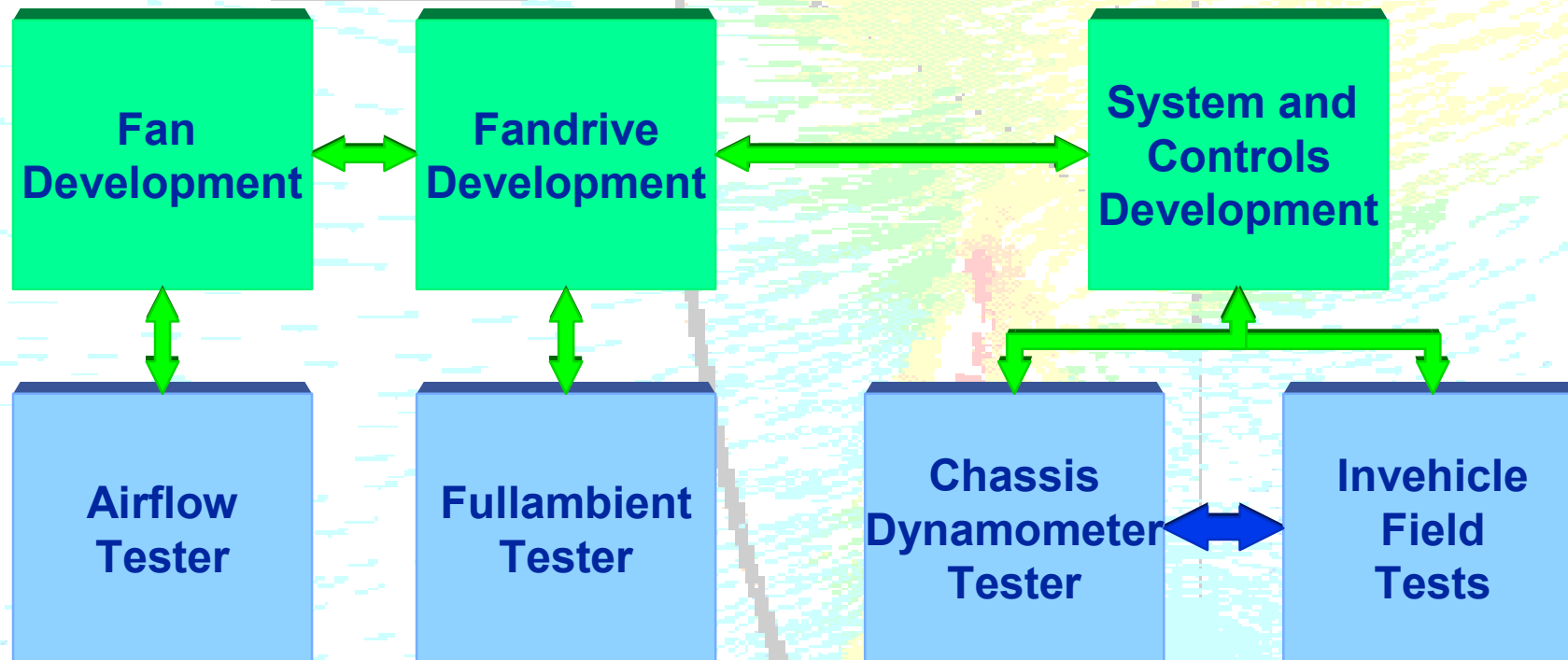
Verification of road tests on the chassis dynamometer and by simulation using KULI

Traditional development process



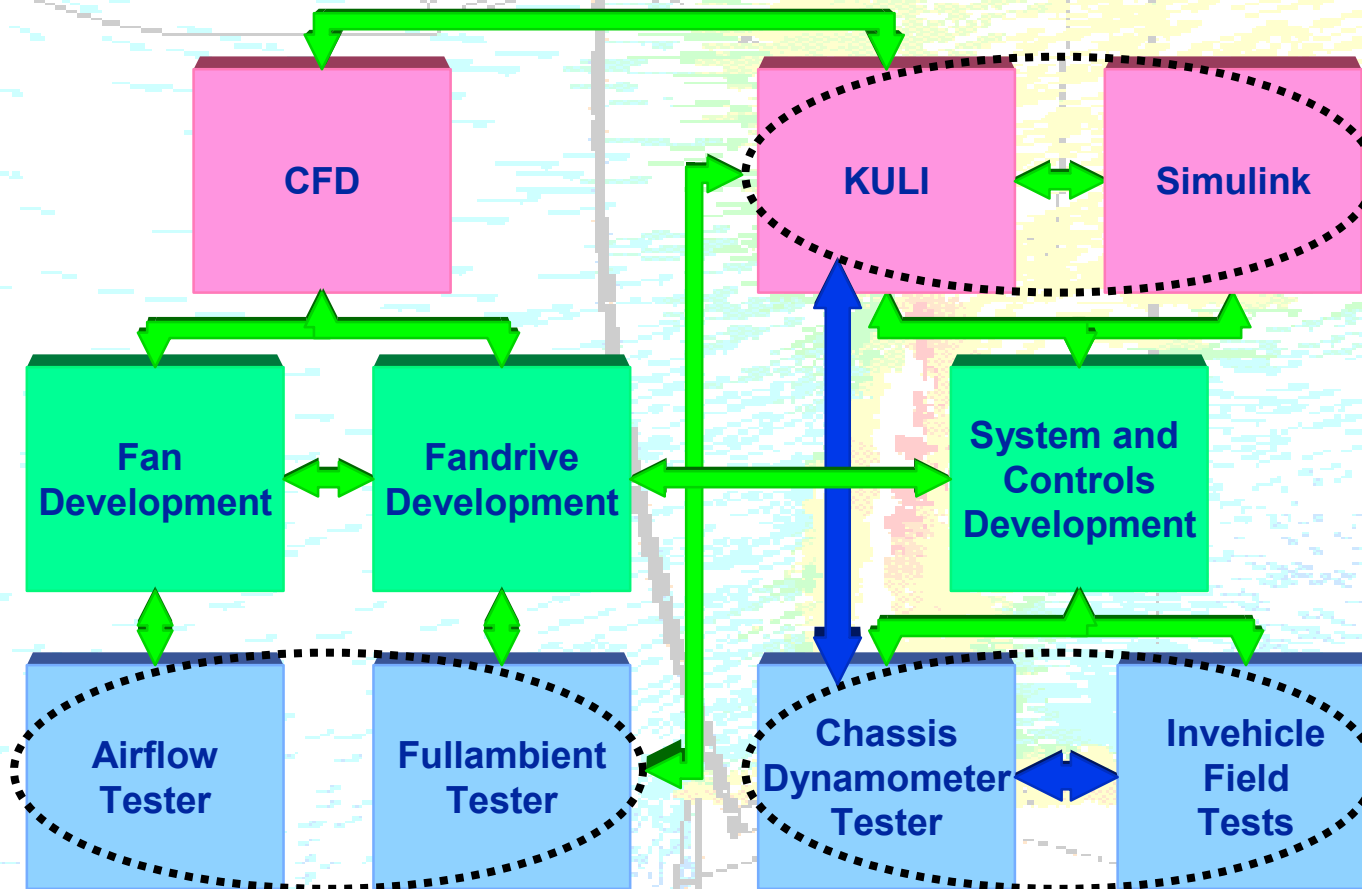
Verification of road tests on the chassis dynamometer and by simulation using KULI

Development process using new testing facilities

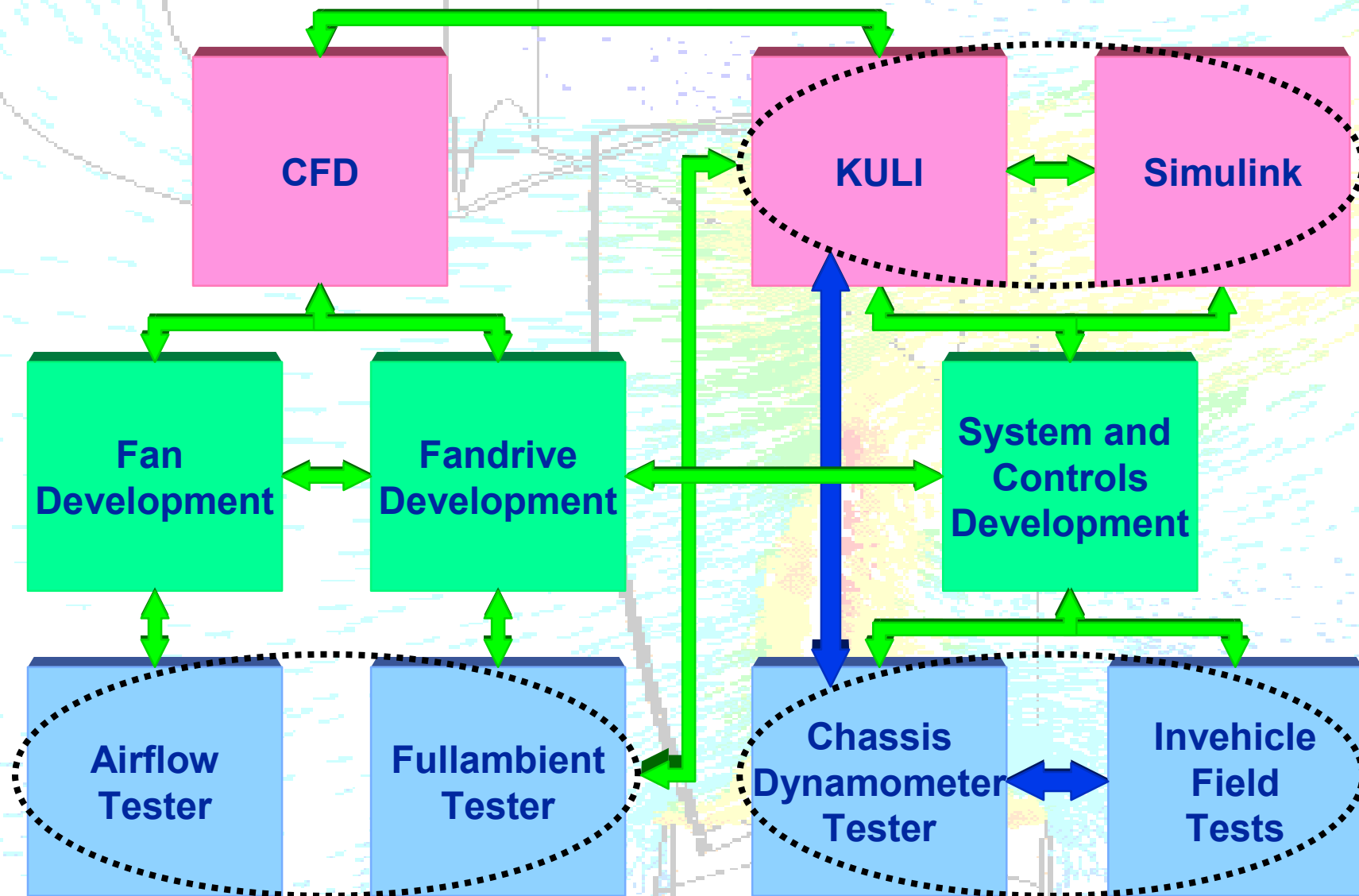


Verification of road tests on the chassis dynamometer and by simulation using KULI

Development process using new simulation tools

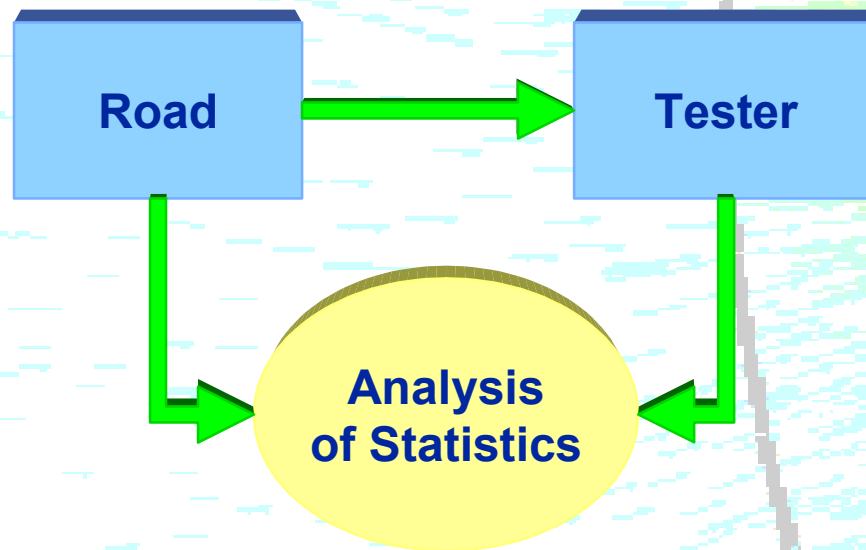


Verification of road tests on the chassis dynamometer and by simulation using KULI

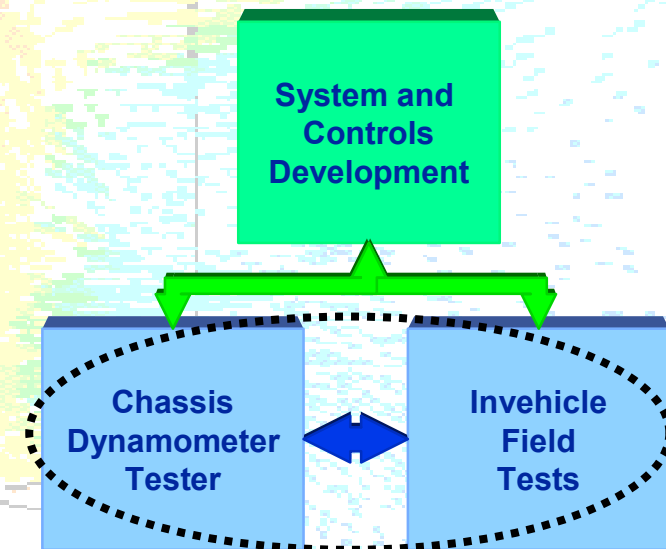


Verification of road tests on the chassis dynamometer and by simulation using KULI

Verification of road tests on the chassis dynamometer

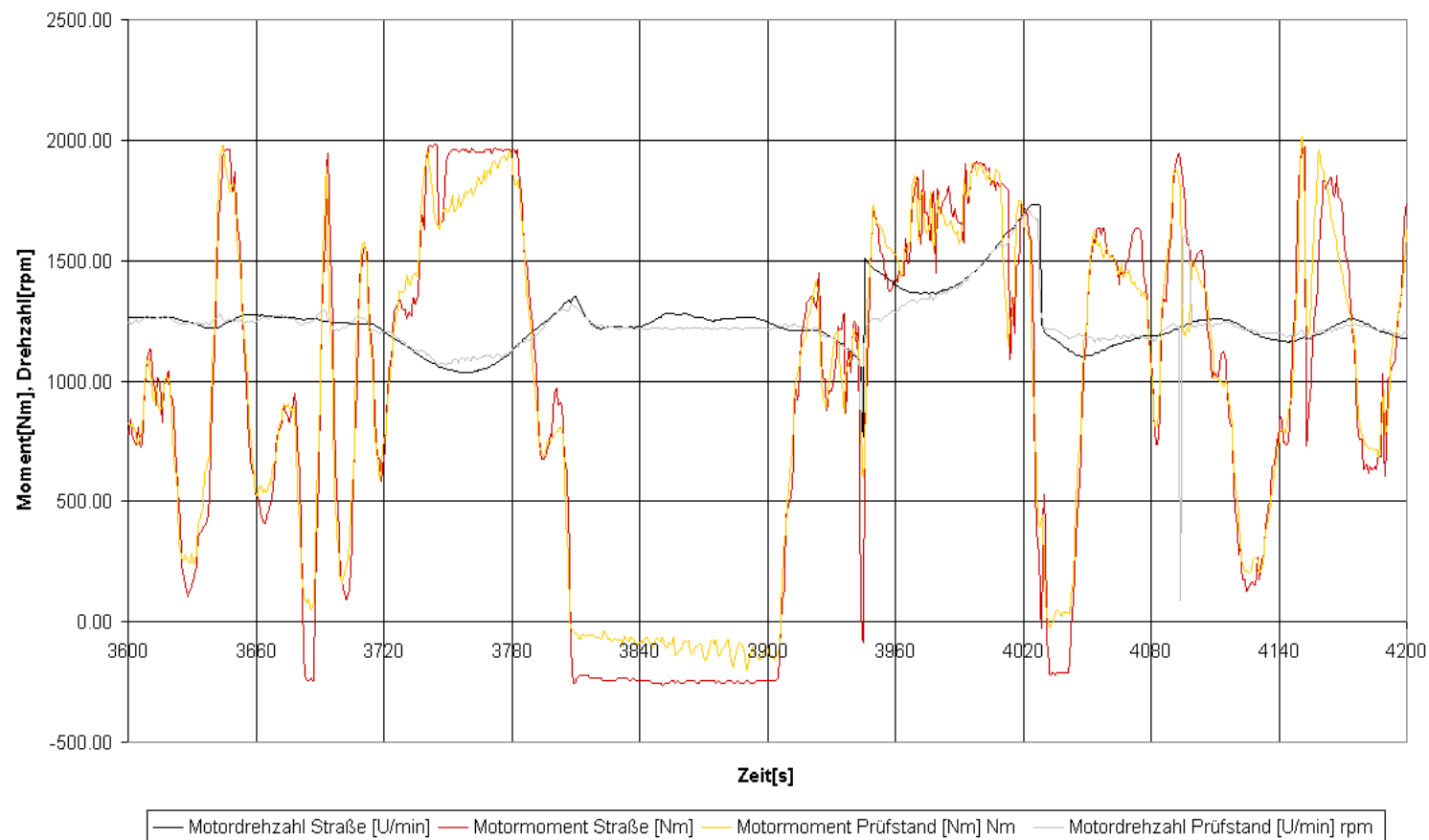


- Analysis of engine power statistics
- Analysis of temperature statistics
- Analysis of fan speed statistics



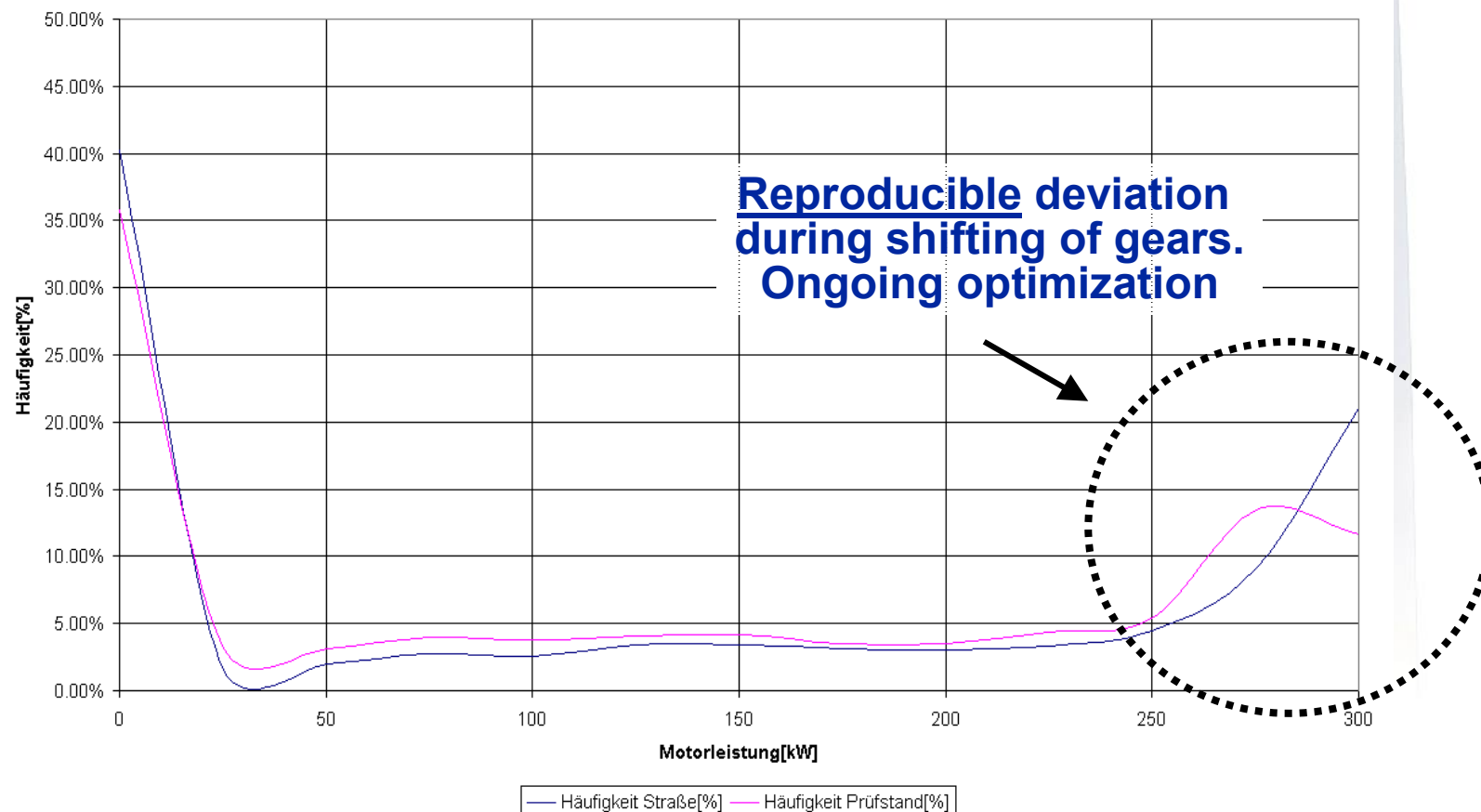
Verification of road tests on the chassis dynamometer and by simulation using KULI

Time based analysis



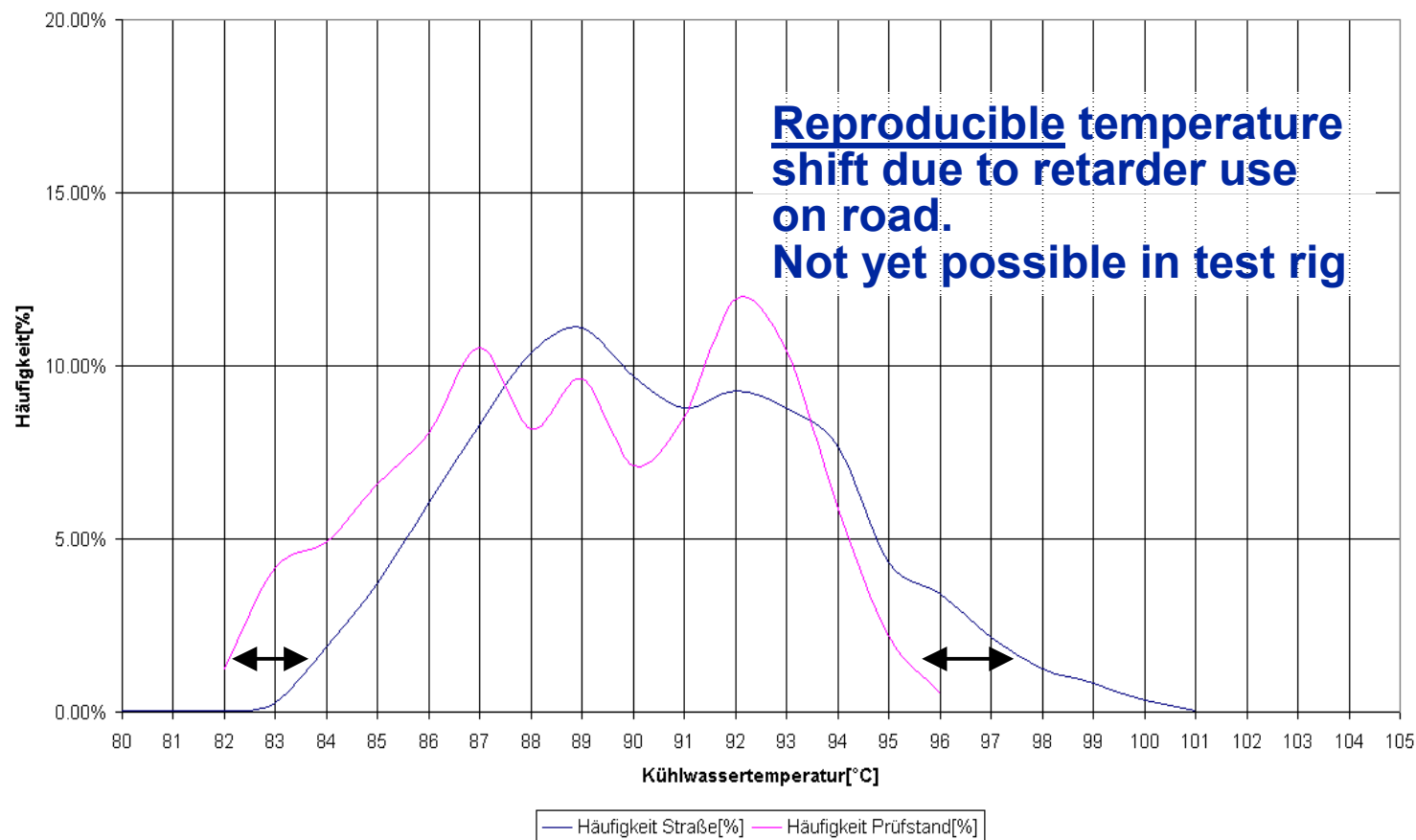
Verification of road tests on the chassis dynamometer and by simulation using KULI

Analysis of engine power statistics



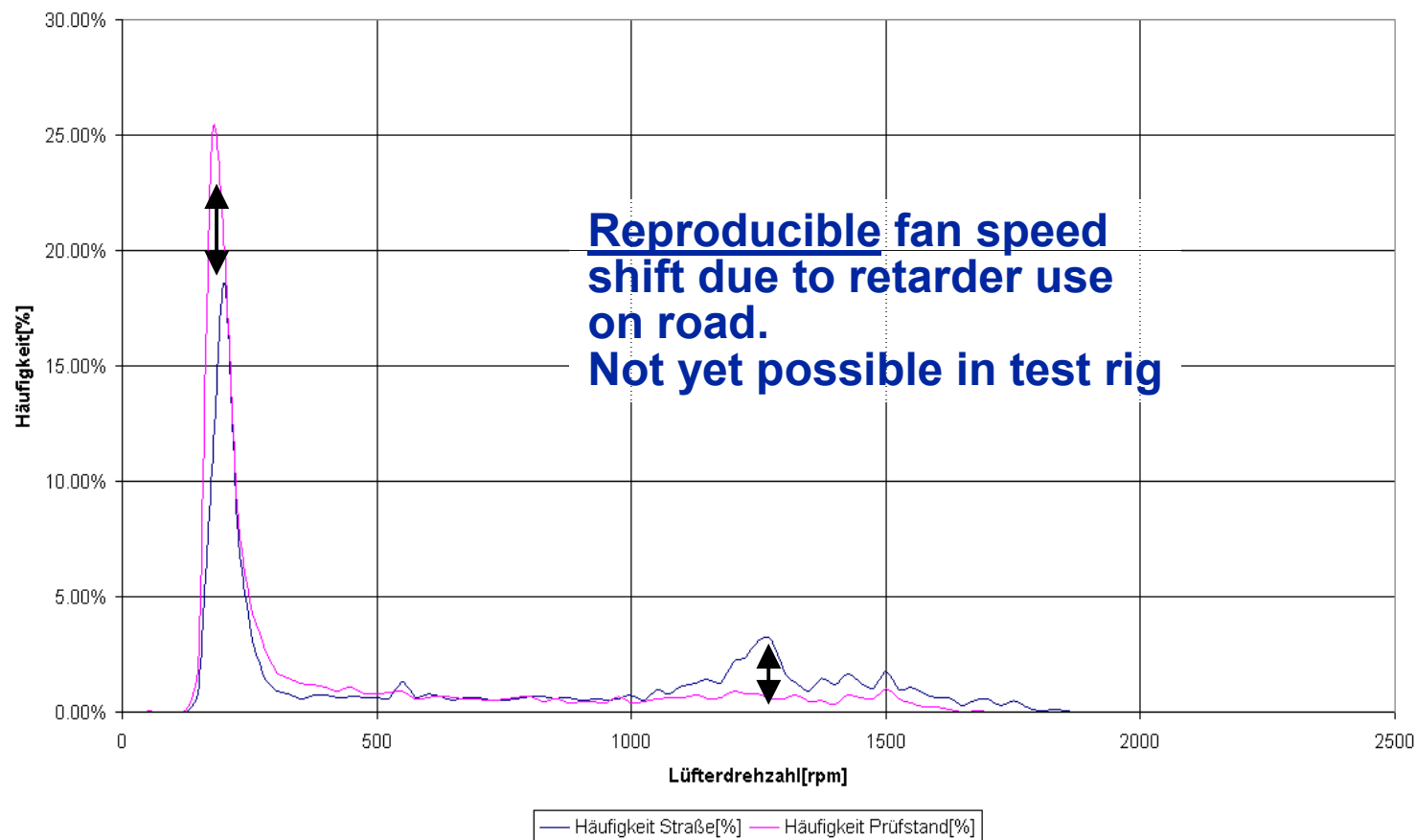
Verification of road tests on the chassis dynamometer and by simulation using KULI

Analysis of temperature statistics



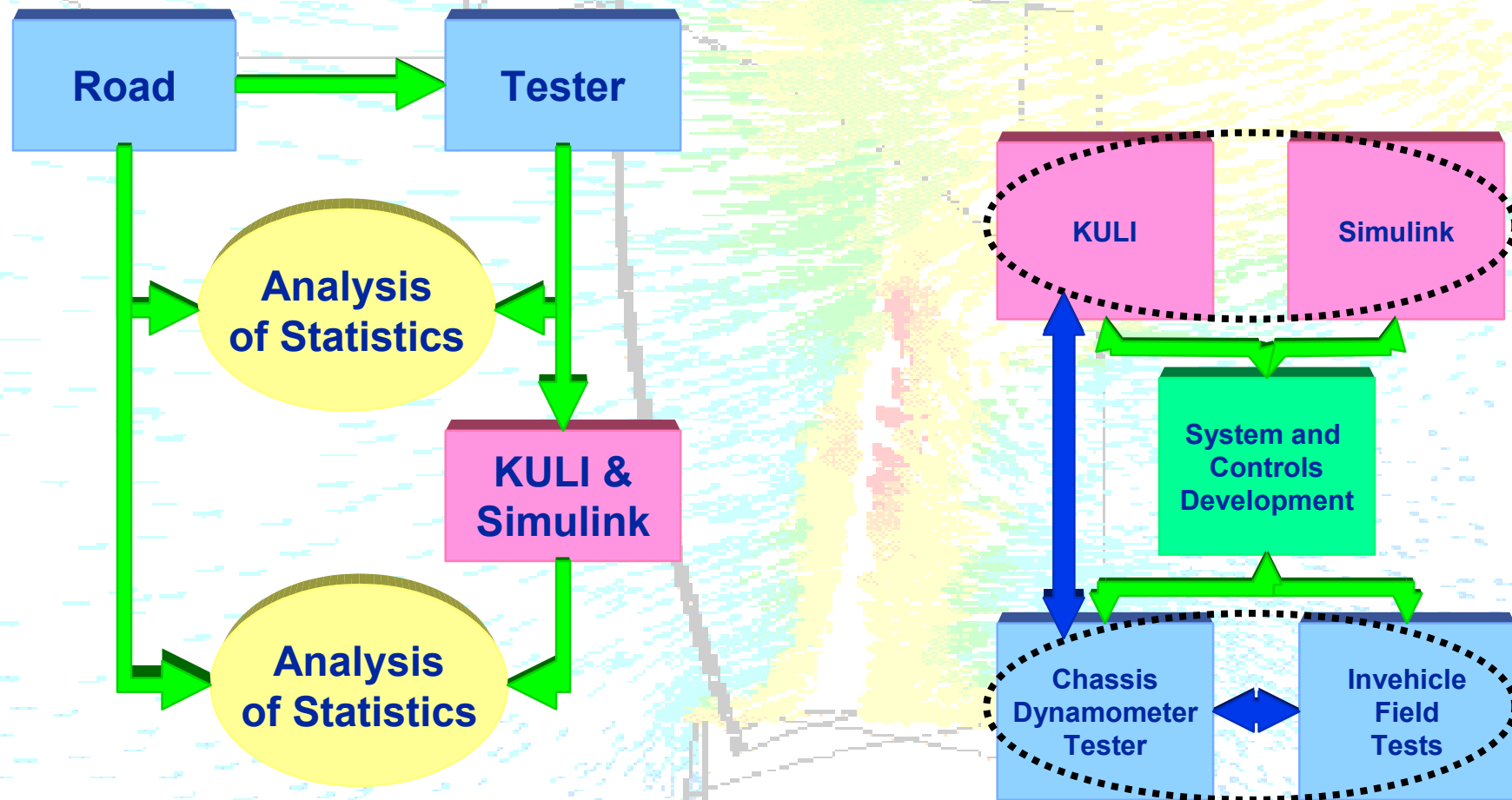
Verification of road tests on the chassis dynamometer and by simulation using KULI

Analysis of fan speed statistics



Verification of road tests on the chassis dynamometer and by simulation using KULI

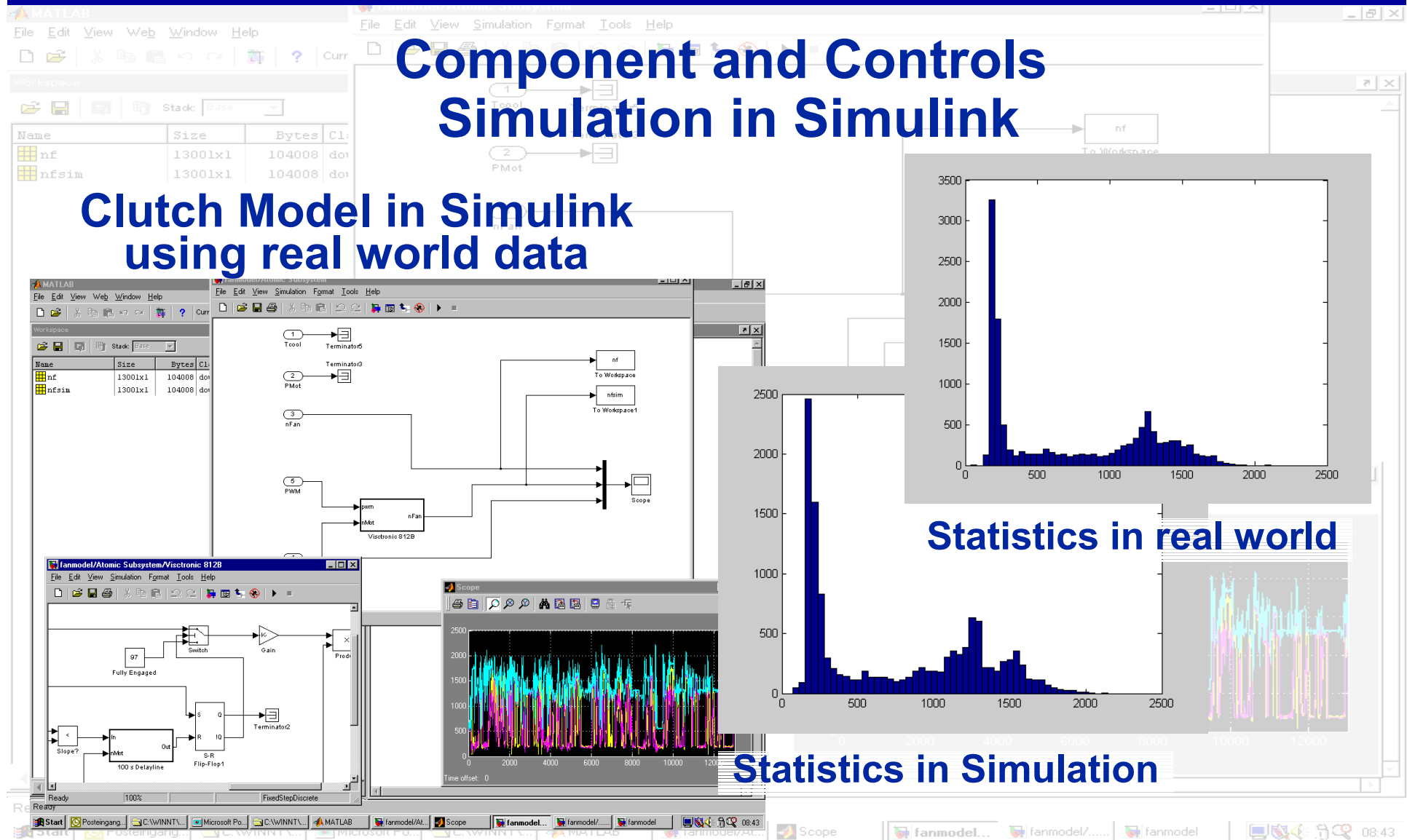
Verification of road tests by using KULI & Simulink



Verification of road tests on the chassis dynamometer and by simulation using KULI

Component and Controls Simulation in Simulink

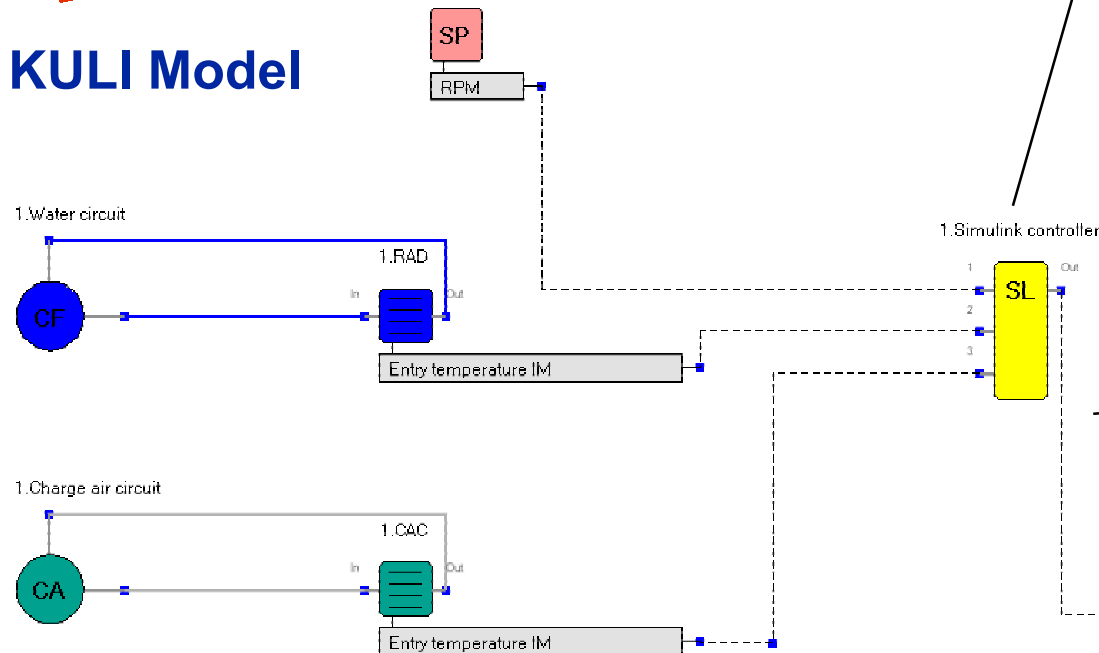
Clutch Model in Simulink using real world data



Verification of road tests on the chassis dynamometer and by simulation using KULI

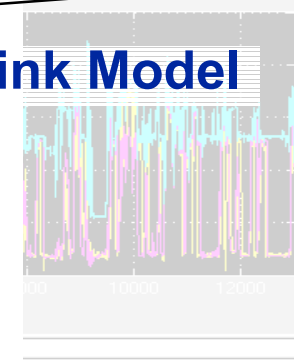
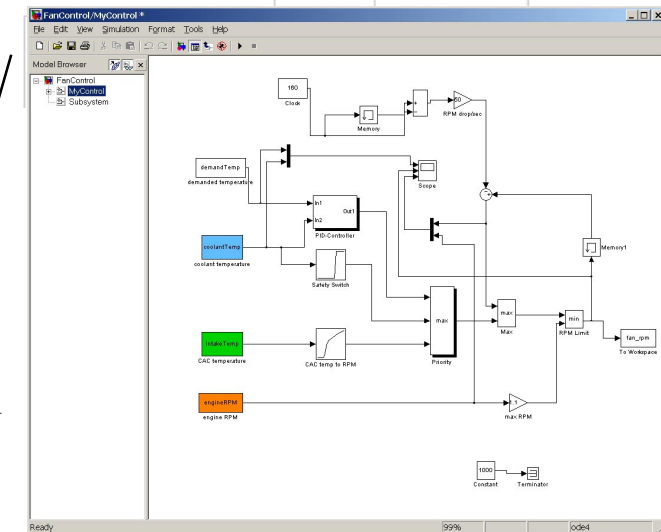
Embedding Simulink Models into KULI

KULI Model



Definition of Sensors

Simulink Model



Verification of road tests on the chassis dynamometer and by simulation using KULI

Status:

- Technical base for invehicle data acquisition
- Chassis dynamometer ready for road data
- First vehicle model in KULI
- Transfer of controls and components into Simulink ongoing
- First test data (simple step tests) in KULI

Next Steps:

- Improve test procedures
- Correlation between tester and KULI for simple profiles (step test, ramp test)
- Improve simulation models for road data
- Correlation between tester and KULI

**Verification of road tests on the chassis dynamometer
and by simulation using KULI**



**Thomas Buchholz
BorgWarner Cooling Systems**

**Verification of road tests on the chassis
dynamometer and by using KULI**